



Introduction

MAPCO as a provider of Oil and Gas supplies and services in Abu Dhabi, servicing Offshore and Onshore Oil operations in the region. Our vision is to build on our unparalleled reputation within the UAE and to expand further within the GCC and Middle East Market. We are successfully making a mark in Saudi Arabia, Bahrain, Qatar, Kuwait and Oman. We are expanding newly in Indonesia Market.

Within MAPCO, everything we do is underpinned by health, safety, quality and the environment, and we work to International Standards. The facilities we offer at Mafraq are second to none, and we operate within a clean and safe environment.

We are also dedicated to the welfare of our employees, and our excellent safety track-record speaks for itself. Our employees are a crucial factor in our success.

Our continuous training programs ensure that we offer the very best services to the industry.

This aside, we are not complacent and we remain committed to developing new services and products to ensure that we meet all our clients' needs long into the future.

In line with MAPCO's wide range of Oil Field Services provision, MAPCO has incorporated the Well services business line to its scope of activities on 2005.

Our success is measured by the diverse solutions we offer and customer satisfaction.

We shall utilize Best Practices in QHSE, Management Processes and Information technologies to ensure no harm to our people, no harm to the environment and to create a practical management model that can be replicated in new operations.

Engineering support is available to handle all aspects of the intervention from the preparation of basis of design documents to program authorship and post job reporting.

From the office-based engineering and support personnel co provision of a highly competent offshore workforce and a diverse range of equipment, NEPTA Well Services Division provides a high quality cementing & coiled tubing service that meets the demands of an increasingly complex working environment.

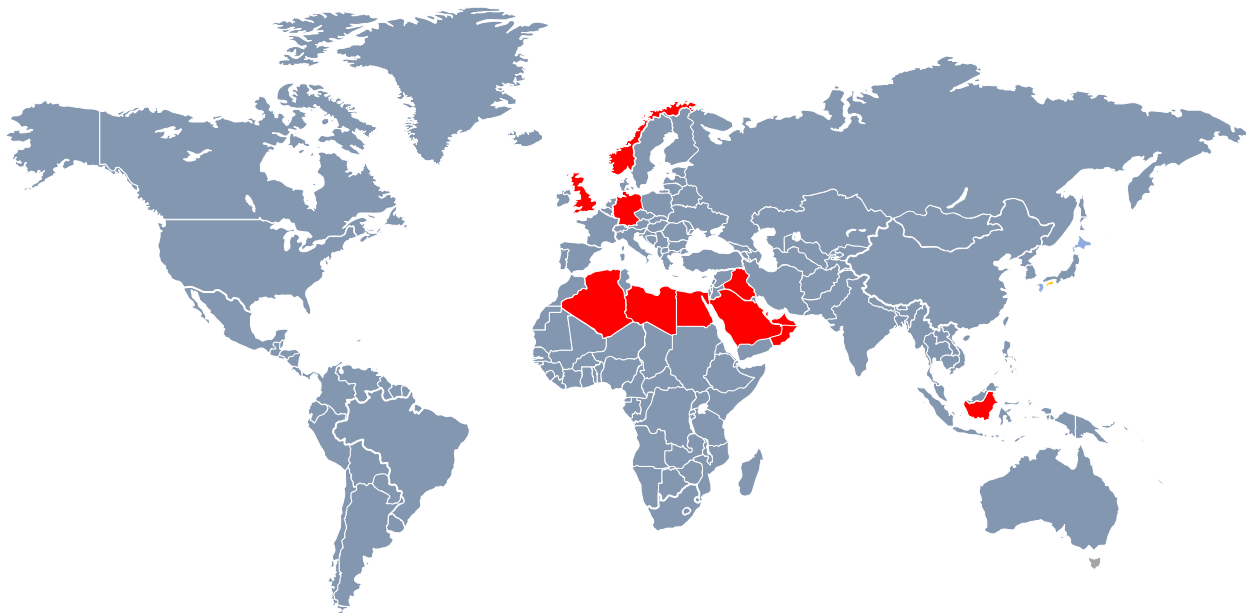
OUR VISION

"A range of specialized services and solutions to the oil and gas industry within UAE OPCOS and GCC countries with technical collaboration with internationally reputed organization in the industry."

OUR MISSION

“Our goal is to establish healthy market competition with no compromise on the quality of services we deliver. To achieve our goal we use the state of the art technology equipment and a highly qualified and experienced service team.”

MAPCO Operating Location





MAPCO Products, Services and Solutions

MAPCO Petroleum Services and solutions combine domain expertise, best practices, safe and environmentally sound well site operations, innovative technologies, and high-quality support aimed at helping its customers increase oilfield efficiency, lower finding and producing costs, improve productivity, maximize reserve recovery, and increase asset value in a safe, environmentally sound manner.

Today, MAPCO Petroleum Services solutions include Well Intervention Services such as coiled tubing, High pressure pumping and stimulation, Drilling and well construction services; such as running casing, cementing, drilling mud and fluid Production Services including well production testing. Strong technical and operational support to the field is vital to the success of any complex global operation that includes remote locations. The key is to provide real-time linkage with world-class experts and knowledge, delivering the latest and best problem-solving capabilities -- anywhere, anytime.

As the industry's focus is moving towards maximizing post-plateau production and ultimate recovery, oil companies have to face more and more resource intensive projects. MAPCO Petroleum Services response to this challenge and a significant growth area for MAPCO. our activity is characterized by long-term relationships between the customer and MAPCO Petroleum Services. It offers a combination of engineering, process management and understanding of MAPCO technologies. As well as providing technology and expertise, MAPCO often works with local subcontractors to harness local knowledge and experience.

MAPCO Petroleum Services



Coiled Tubing

Increase production from older and marginal fields with engineered fluids and downhole systems



Stimulation

Creating highly conductive reservoir flow paths to maximize production



Cementing

Reducing risk with complete zonal isolation



Wellhead and Christmas Tree

WH & Xmas Tree management and prevention maintenance



Well Testing

Determine reservoir deliverability and identifying produced fluids



Drilling Services

Reduce drilling time and cost, regardless of the target, the hole size, or the formations



Slickline

Cut well intervention costs and boost production by convey most of downhole tools



Directional Drilling

Creating highly conductive reservoir flow paths to maximize production



Consulting

Best practices, new technology, and management solutions



Drilling Fluid

Reduce drilling time and cost, regardless of the target, the hole size, or the formations



Production & Flow Assurance

Best practices, new technology, and management solutions



Tubular Running Services

Providing running tubular with well integrity, safety, and efficiency



Air Lube Services

Providing best Air Loop and H2S safety services to the petroleum industry



Nitrogen Purging & Leak Detection

Specialized of providing best Nitrogen purging and leak detection services

Quality, Health, Safety, and Environmental (QHSE) Policy

It is our intent to demonstrate an ongoing and determined commitment to improving health and safety at work throughout our organization.

We will ensure the health and safety at work of all our people and any other people who may be affected by our work activities and comply with the requirements of health and safety legislation.

Through the implementation of the Health and Safety policy, the Management are committed to achieving the following objectives:

- To provide, as far as reasonably practicable, a safe and healthy working environment, safe premises and facilities for staff and visitors;
- To create for employees, as far as is practicable, a working environment where potential work-related stressors are avoided, minimized or mitigated through good management practices, effective human resources policies and staff development;
- To ensure that all staff are aware of their health and safety responsibilities and know what is expected of them and what they must do to discharge the responsibilities assigned to them;
- To ensure that staff have access to appropriate training and development to enable them to discharge competently the responsibilities assigned to them;

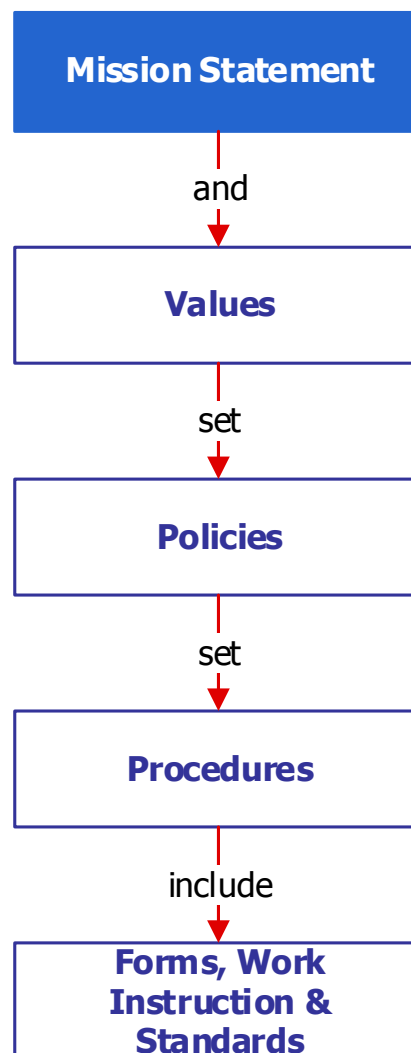
To have an effective system for communicating and consulting on health and safety matters, and securing the co-operation of employees in implementing the Health and Safety Policy;

Martin Ridge

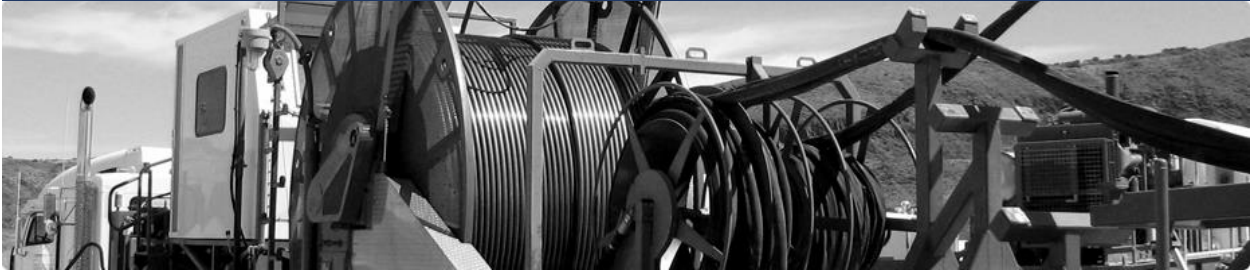
General Manager

Commitment to Quality, Health, Safety and the Environment

MAPCO Petroleum Services operates in many varied and often challenging geographical environments. An unwavering commitment has always been maintained to the highest standards of the quality, health and safety of our employees, customers and contractors, as well as for the protection of the environment in the communities in which we live and work. The long-term business success of Blue Ocean Supplies depends on our ability to ensure that QHSE remains a top priority for the management and each employee. The Blue Ocean Supplies QHSE policy and diverse standards are applied throughout the company. Each employee must maintain up-to-date certifications in essential QHSE training courses through both traditional classroom and on-line interactive learning.



WELL INTERVENTION SERVICES



MAPCO Petroleum Services offers an extensive range of well intervention services and global experience to extend the life of producing wells by improving performance or providing access to stranded or additional hydrocarbon reserves.

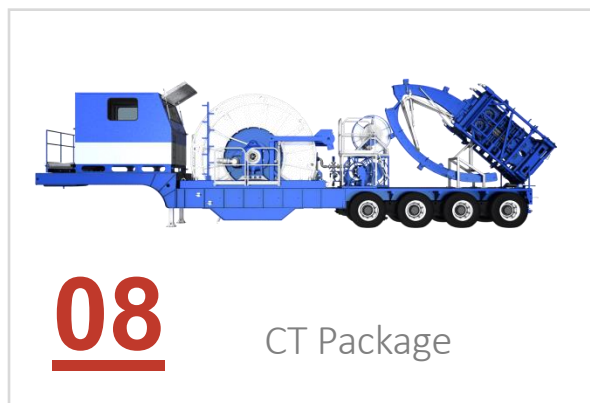
MAPCO's experience, technical excellence and innovation allows us to deliver tailor-made solutions to meet our customers' well data needs - providing the enhanced data they need, when they need it.



MAPCO provides multi-functional deployment equipment for rapid deployment on land, platform and deepwater subsea conditions globally.

Coiled Tubing Services:

MAPCO Petroleum Services offer a comprehensive coiled tubing service, based on a wide range of proven abilities. With units suitable for operation in Zone I and Zone II, MAPCO Petroleum Services coiled tubing product line is well supported by numerous auxiliary facilities and functions. Equipment is drawn from the pumping and nitrogen service lines as required, whilst dedicated support of our coiled tubing extend the scope of operation for wide variety of Onshore and Off-shore applications.



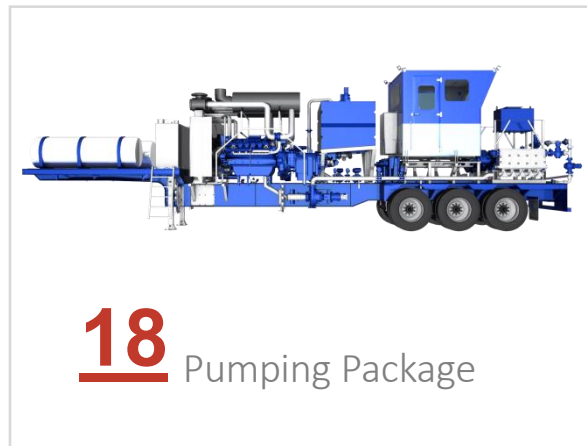
With our highly experienced personnel and engineering capabilities, we can customize the service for job-specific requirements. We provide exactly what our customers need to get the job done. This lets us deliver safe, cost-effective solutions for virtually any operational challenge, including high-pressure/high-temperature and H2S applications with different range of Coiled Tubing size starting from 1.25" up to 2 3/8".

High Pressure Pumping and Stimulation:

A full range of chemical and hydraulic stimulation techniques are offered, either within the high pressure pumping service line or as a combined operation with coiled tubing or Nitrogen pumping systems.

The diverse range of operations, from flow line and matrix acidizing to high pressure fracturing services, are serviced from the extensive fleet of pumping and fluid handling equipment on inventory. With a focused management and engineering support team, MAPCO Petroleum Services provide a complete stimulation service.

MAPCO state of the art high pressure twin pumping units contribute high role of our operations success and performance caliber. Our stimulation equipment are complete with all necessary auxiliaries such as water and acid tanks and choke manifolds as well as high pressure treating iron & valves to provide a complete service package.



18 Twin Batch Mixer

MAPCO Petroleum Services combination of skilled personnel and proven equipment allows the company to supply a high quality and comprehensive stimulation service line.

Equipment is available for all environments from land operations, using truck-mounted units to offshore Zone I and Zone II systems. Our

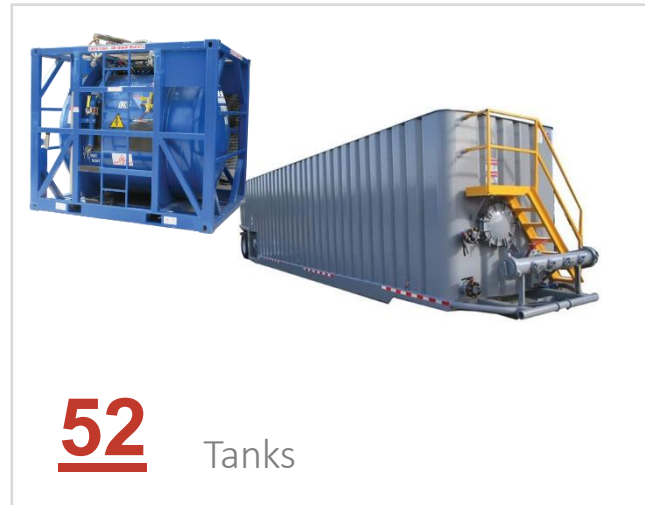
inventory includes mixing equipment suitable for all oil well stimulation applications.

Experienced management, engineering and operations personnel support the product line, ensuring that all stages, from planning through execution and reporting are effectively and accurately completed.

Fluid Storage Tank Services:

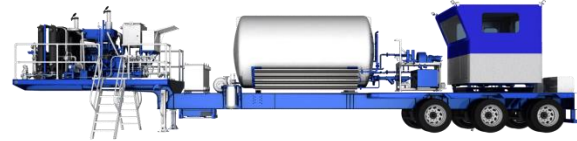
Our huge fleet of available tanks is ideally located in multi-location. Our team will safely and efficiently coordinate all logistics for the transportation of equipment and fluid tanks. Our tanks fleet consists of :

- 20 X 500 bbl Frac Tanks.
- 12 Fluid Storage Tank & Diesel.
- 10 X 5000 USG Acid Tanks
- 10 Acid transport Tank



Nitrogen Pumping Services:

Nitrogen pumping is offered both as a service line in its own right and as a support service to other MAPCO Petroleum Services product lines with applications varying from gas lifting, wellbore cleanouts and process plant purging to nitrified acid and foam



11 Nitrogen Pumping Package

diversion.

MAPCO along with our successful alliance with Highly reputed Service Companies provide a high quality range of nitrogen converters from ambient vaporizers for low volume and pressure applications, to diesel powered Zone II rated units capable of 10,000 psi and 180,000 SCF/HR. Liquid nitrogen transport tanks and high pressure treating iron are

supplied from inventory to provide a complete service package.



15 Nitrogen Tanks

Slickline Services:

MAPCO offers an extensive range of slickline services with innovative equipment, together with highly trained competent experts. We provide every slickline capability from basic completion intervention applications to advanced services.

In addition to standard 108" slickline, we also provide 125" and 160" slickline which gives performance capabilities similar to braided cable.

MAPCO can also accommodate customer requirements in relation to pressure control equipment ranging from 3" to 7 5/8" and from 5K psi to 15K psi.



01 Slickline Package

PRODUCTION AND FLOW ASSURANCE



Capturing key production measurements such as flow rate, fluid properties, composition, pressure, and temperature at live well conditions helps to identify what's happening downhole and at the surface with greater certainty. Schlumberger production testing expertise helps pinpoint where you can make improvements, increase efficiency, and focus field investments.

Surface Well Testing and Monitoring

MAPCO provides surface well test solutions based on extensive field experience and a full understanding of the attributes of a well enabling you to achieve operational profitability and efficiency.

MAPCO Petroleum Services' well testing specializes in surface production testing and flowback services. Works together with our clients to optimize maximum initial production performance. Flow back and testing services are vital to the overall production of the well and MAPCO well testing is dedicated to using the highest quality equipment and the personnel. At MAPCO Petroleum Services, our well testing has a diverse fleet of equipment along with the knowledge to effectively treat each well as its own specialized and unique project. To support these services, the company has a complete line of testing equipment.



01 Well Testing Package

Fluid Lab Services



04 Labs

Lab testing of cements and cementing materials is an essential part of the cementing process. Testing begins at the manufacturing plant of the cement and additives to monitor product quality. It continues through to the slurry design stages at Schlumberger and, in some cases, at the clients' or independent laboratories. Laboratory testing of field samples is also used as an aid to post-job evaluation.

DRILLING AND WORKOVER SERVICES



MAPCO Petroleum Services provides the latest drilling technologies for directional drilling, casing running, Cementing services, MWD and Airloop Services.

Our comprehensive integration drilling services, processes and personnel delivers best drilling performance with faster rates of penetration, superior hole quality and precise wellbore placement. We offer a variety of directional drilling services for all applications from land and shallow water environments to extended-reach offshore drilling.

Directional Drilling Services

MAPCO Directional Drilling optimize the drilling process through a proven philosophy of modeling, measuring and optimizing by our expert and technology to help make decisions that can lead to improved drilling practices. Optimization service focuses on maintaining the integrity of the drill string, managing the hydraulic pressures, ensuring effective hole cleaning and determining the pressure limits of the open hole in order to maintain wellbore integrity—all crucial aspects of drilling a wellbore.



03

Directional Drilling Package

Drilling fluid Services

MAPCO Provide innovative fluid systems and products designed to advance the science of drilling wells. By combining existing technologies into a single package and developing new approaches in fluid chemistry, MAPCO reaches new performance levels for customers. MAPCO's fluids systems are specially formulated, tested and proven in the harshest drilling applications around the world. These dynamic solutions are changing the way the industry thinks about drilling fluids and the environment.



10 Drilling Fluid Package

Our team of experienced mud engineer's work closely with clients to improve operational efficiencies, reduce costs and resolve site-specific challenges. Engineers provide on-site advice and training for the best use of our drilling fluids and equipment. Our engineers are also supported by laboratory specialists who have the ability to analyses samples and customize drilling fluids for clients.

Casing Running

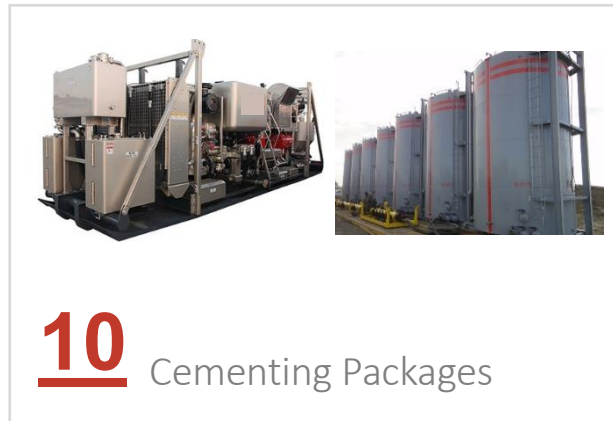
MAPCO combines conventional and patented casing and tubing running technologies. Our solutions consist of a full line of services including casing running, tubing running, torque monitoring, pick-up and laydown technology. Whether basic casing designs or complex well completions MAPCO is committed to providing a safe and efficient service.



06 Casing Running Package

Well Construction Services

MAPCO Petroleum Services in collaboration with highly reputed Partners are leading the way, breaking ground and discovering new paths, while raising industry standards in well Cementing Technology. As the safety, performance and reliability of equipment, personnel and data continue to play a vital role in the success of the oil and gas industry, MAPCO "NEPTA" Petroleum Services is positioned to excel in all these areas.



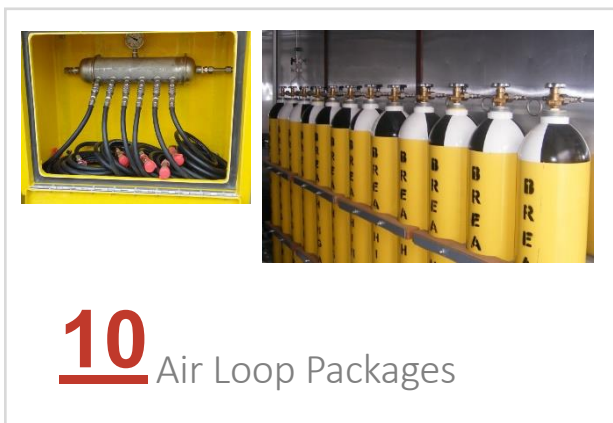
The diversified experience and reputation of our partners combine the strengths and best practices of industry leaders, with a leading marketing presence and dependable track record.

Our experts are committed to superior engineering. Leveraging advanced design technology including and advanced fluid displacement simulator, we apply high-quality products and additives using high-performance equipment for dependable, long-term cementing in every well, every time. By using the output data identified by the cementing software—in either 2D or 3D visualization—solutions are tailored to reduce risks of intermixing while incorporating contingencies to meet cement placement objectives.

Airloop Services

With our long experience in supporting the petroleum industry (Oil and GAS), established an Air Loop and H₂S Safety Services' division due to its belief in health, safety and environment.

The Air Loop and H₂S Safety Services division is involved in providing, for many years, H₂S/Air loop services, equipment and personnel to the Petroleum industry for onshore and offshore, drilling, production and workover rigs and barges.



WELLHEAD AND CHRISTMAS TREE SERVICES



Wellhead and Christmas Tree is the main equipment for oil production, water injection and downhole operation and maintaining the integrity of such critical equipment is a big challenge and require high efforts and cost associated. MAPCO Petroleum Services focused on Wellhead life enhancement, the core services of this portfolio are designed around the concept of proactive preventative maintenance, we believe that value is obtained by creating a maintenance program that is carried out in a timely manner and that is supported by the records that are easily obtainable by a large cross section of our customers operations in with the international standards practice and recommendation for the performance, dimensional and functional interchangeability, design, materials, testing inspection, repair of wellhead and Christmas tree.

MAPCO Petroleum Services is pleased to have been requested to deliver a wellheads preventive maintenance, which includes the following works scopes:

1. Wellhead and Christmas Tree Visual Inspection for corrosion, mechanical damage, damaged coating.
2. Function Testing Christmas Tree and Wellhead Valves
3. Full greasing (and sealant injection as required) of all Christmas trees and annuli valves.
4. Pressure Integrity checks on all voids, including (tubing hanger void, control line void, casing hanger void and secondary seal)
5. Reenergizing and retesting of wellhead seals as required
6. Rectification of mechanical and pressure integrity issues, including: thread repairs and replacement of components (e.g. greasing fittings, injection fitting and packing port threads).
7. Replacement of handwheels, bearing, bonnet seals, valves, Gauges, needle valves and other wellhead accessories.





MAPCO PETROLEUM SERVICES

Atiq Khalaf Al Mazroui Building
Khalifa Street
P.O Box 45601
Abu Dhabi, UAE
Tel: +971 2 626 4447
Fax: +971 2 626 2161
Email: mapco@mapcouae.biz

Damascus – Tanzem Kafrose
Opposite Cham City Center
Bldg., no. 179 – Floor No. 4
Tel. No.: 00963112128394
Email: mapco@mapcouae.biz